



IsatDock Firmware Upgrade Guide

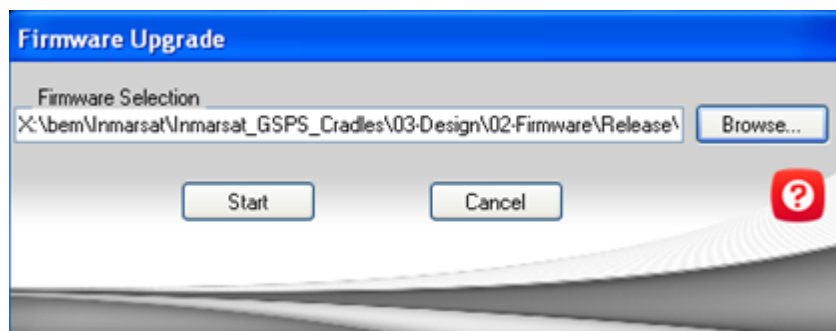
Configuration Manual

Upgrading Firmware in the IDMS

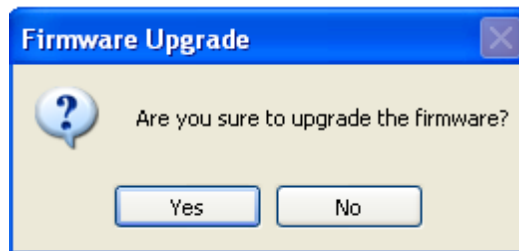


After you have opened up *ADVANCED OPTIONS* select *UPGRADE FIRMWARE*.

You will then be given the option as the following image suggests to locate the .hex file to upgrade to, if you have just downloaded the IDMS, the latest version will be located here.

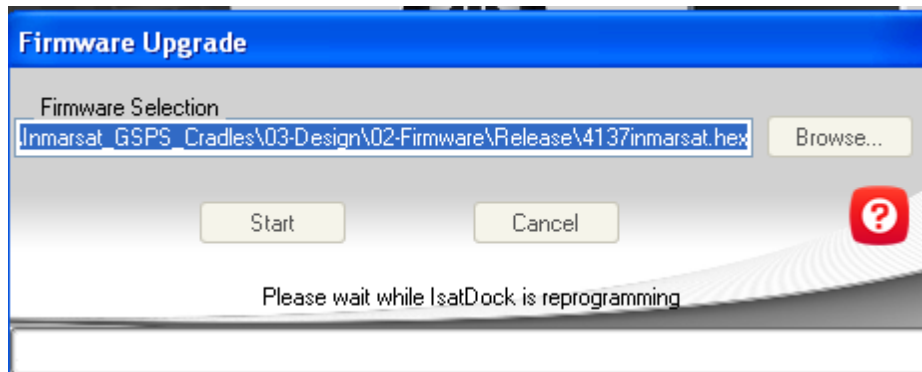


The software will then prompt you to confirm the upgrade.



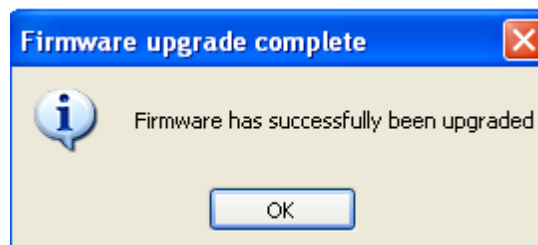
Click on **YES** and Enter

The following image should then appear

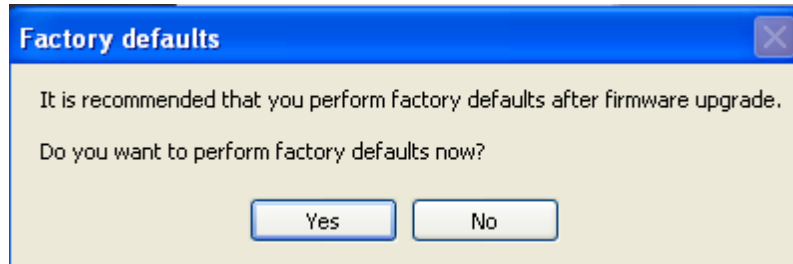


Click on **START** and Enter.

When this message appears you will get quite a number of beeps through the IsatDOCK, this is normal procedure. Once it has gone through its rebooting process the following image will appear.



You will then be prompted with the following message:



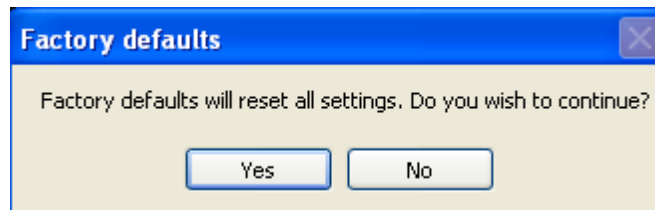
At this prompt, please select *NO* for now. The Docking Station will now reboot itself. You will notice the IDMS will appear on your screen with no connection, as per below image. Click on *CLICK TO CONNECT / DISCONNECT* again to establish connection.



Connection will be made again successfully. You will then need to click on *SHOW ADVANCE OPTIONS* and select *FACTORY DEFAULTS*



You will then receive the following message:



Select **YES**.

You will notice a timer appear on your screen while it restores to Factory Default. It will then prompt you with a message advising **FACTORY DEFAULTS SET**.



Click **OK**. It then automatically disconnects the software. If you need to reconnect again to see the firmware version simply click on connect again.

The Upgrade has now been successfully completed.